

The ProLATCH* Subsea P&A System Delivers Superior Performance, Offshore Japan

A successful campaign, utilizing the Wellbore Integrity Solutions (WIS) Pipe Cutter and ProLATCH* System, delivered cutting efficiency and time savings for the customer.

The ProLATCH* System plays an integral part of a successful P&A program.

A combination of expertise and technology offered by WIS in an exploration well P&A delivered outstanding results. The customer reported a significant reduction in cutting time, and the casing(s) and wellhead were recovered successfully to the surface. The use of the ProLATCH* system simplifies both the cutting operation and the recovery of the wellhead. The system consists of a Hydraulic Pipe Cutter, a Non-Rotating Stabilizer, and a Non-Rotating Spear that can be configured to engage the internal profile of the wellhead system. In this example, the use of the system resulted in the recovery of a Drill-Quip SS-10RLD Wellhead in 3 hours and 30 minutes.

CHALLENGE

Prior to the completion of an offshore exploration well, the customer required WIS to cut and retrieve four strings of casing, including a dual cut of 20 inch x 36 inch with High Pressure Well Head (HPWH). The 20 inch x 36 inch HPWH also required cut and retrieval in a single trip.

SOLUTION

WIS recommended the use of the ProLATCH* system to conduct this P&A program.

RESULTS

- The 9⁵/₈ inch 53.5ppf and 13³/₈ inch 68ppf casings were cut in a record time of 3 minutes
- The 20 inch x 36 inch HPWH was cut and recovered efficiently, in a single trip in 3 hours and 30 minutes, faster than planned
- No additional trips were required to cut the casings
- The program was completed successfully, with zero HSE or Service Quality Incidents

Figure 1:
Cut 9⁵/₈ inch
Casing 53.5ppf



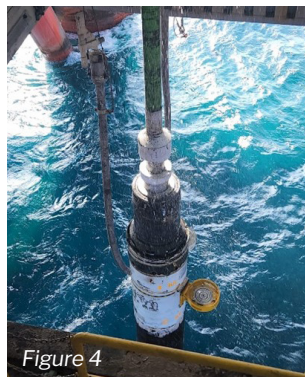
Figure 2: Cut
13³/₈ inch
Casing 68ppf



Figure 3:
Cut 20 inch x
36 inch Casing



Figure 4:
ProLATCH*
with HPWH at
MoonPool



*Mark of Wellbore Integrity Solutions. Other company, product, and service names are the properties of their respective owners. Copyright © 2022 Wellbore Integrity Solutions. All rights reserved. WIS-FS-MKT-209_rev2